

ZAGROS Joint Venture Partners

Response to investment opportunity to build 500,000 housing units in Iraq



BEIJING ARCHITECTURAL & ENGINEERING DESIGN COMPANY

ABOUT US

Founded in 1981, Beijing Architectural & Engineering Design Company (BAED) is an independent corporate entity affiliated to Beijing Construction Engineering Group Co., Ltd (BCEG). The company is engaged in comprehensive architectural & engineering design and has National Class A qualification for engineering design issued by the Ministry of Construction of the People's Republic of China. BAED is one of members of China Prospecting and Design Association and obtained the certification of ISO9001:2000 for international quality management system in 2003.

Since its foundation, sticking to the pursuit of superior design and keeping the unremitting practice of sense of professional responsibility, BAED has undertaken, participated and provided engineering consultation services in various types of over 700 of engineering designs including multipurpose public buildings, office buildings, commercial buildings, hotels, residential district development, houses and high-class apartments. In particular, the company can provide the professional services such as project feasibility study, project early-stage evaluation and planning, general planning, various large public and civil engineering design, interior design, landscape design etc. Today there are many BAED's design works all over the China and abroad, some of its designs have been granted national, ministerial and municipal awards.

Over years of design and management practice, BAED has formed a professional design team characterized by the combination of multiple specialties, extensive experience and having professional ideals. It has more than 210 staffs, including 32 National Registered First-Class Architects and National Registered First-Class Structural Engineers, senior architects, senior engineers in various specialties of architecture, structure, equipment, electricity, budget, on-site service and technology research. With the talented and experienced engineers continually join BAED, especially for those with the international work background, the multi-culture and academic study environment is formed in BAED. Rigorous and professional style, dynamic and innovative design philosophy, collaborative working pattern and unrestricted view on talents have driven every designer in BAED to march forward in a down-to-earth way on the road leading to design ideals.

BAED has well organized design departments and comprehensive management of design process which are reliable guarantee for providing the professional design services. BAED has five Comprehensive Design Department, General Architect Office, Chief Engineer Office □ Special Structure Design Office □ Project Investment Budget Estimation Department, Site Service Department, Medium Animation Studio, Technical Committee, Marketing Department, Administrative Office, Accounting Department and Shanghai Branch Office. Based on company's condition and construction market requirements, BAED has established long-standing and extensive cooperative relationships with architect firms such as Fangti Space and Ehe-Design Salon. Those have offered more support and resources for us to provide comprehensive design service for client.

BAED has rich experience in cooperation with international design organizations. It set up a joint venture company named Beijing Xing Sheng Architectural & Engineering Design Company Ltd lasting from 1992 to 2004 with KTP HO & PARTNERS, a Singapore design firm. It also carried out various and efficient

ZAGROS Joint Venture Partners

Response to investment opportunity to build 500,000 housing units in Iraq

design cooperation with a number of overseas famous architect firms from Hong Kong, Japan, Taiwan, Singapore, French, the U.S. in sino-foreign cooperative design projects, e.g. Lingnan Hotel”, “Sunshine Plaza”, “Changxin Building”, “International Corporate Square”, “Lanhua · International Mansion”, “Gateway Plaza”, “New Sanlitun Modern Cultural Plaza”, etc. BAED practiced a lot in cooperating with world famous design organizations in terms of detailed design and construction drawing design. The company is successful in integrating international design philosophy with Chinese current practices and design process management, and has accumulated a lot of experience.

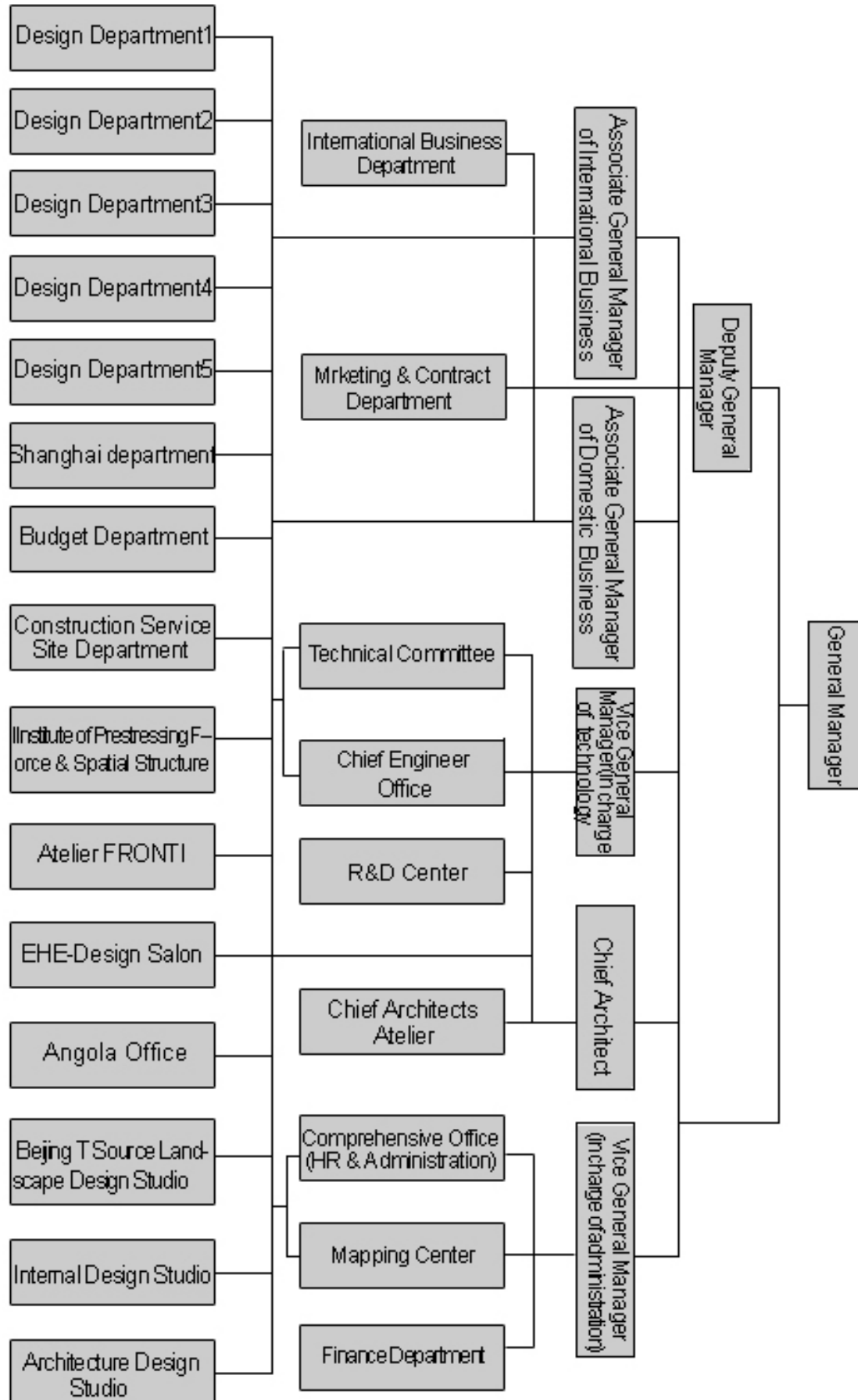
In light of the exploration of overseas markets by Chinese contractors in recent years, BAED has also been actively pursuing for international projects based on the normal practice of EPC in the global construction market, thus satisfying both market demands and the strategic development needs of BAED at the same time. Enjoying the resource advantages offered by Beijing Construction Engineering Group, one of the world’s top 225 international contractors, BAED has cooperated with various other major contractors in EPC and other modes, fully utilized its competitive edges in design, capitalized on its advantage as a design service provider to win over subsequent construction works and accumulated abundant experience in offering integrated design and construction services together with Beijing Construction Engineering Group Co., Ltd and other large contractors.

BAED has been persistently following the design philosophy of integrating the creative design and value maximization for the clients. In every design aspect and stage, BAED is trying hard to meet the client’s needs with superior design philosophy and advanced technology, and delivery the maximized investment return to the clients with the most cost-effective budget. With over twenty years of design practice, BAED has accumulated extensive experience in providing design services and management to meet different requirements of particular client and development project. For the different requirements of developer, project management company and government in China and abroad, BAED has provided various styles of design services in a number of design projects, including Anhui Beili Community, Tsinghua Tongfang Science & Technology Plaza, Jiahua Building, Community at No.1 Baiziwan, Fortune Tower Complex Building, Sino-trans Plaza, Rehabilitation and Care Center of China-Japan Friendship Hospital, Guangzhou Zhongdai International Brands Plaza, Commercial Center in Astana, Angola Luanda Office Building, Songjiazhuang Economy Community, ect. All these works and services have received the recognition and favorable comments from clients.

BAED performs design services based on the entrusting by customers with different background. We hope to establish a long cooperative relationship with them through practicable design and with our strong sense of responsibility. While performing design, we emphasize to take into account the recognition of project value, best design concepts, mature technology and construction cost control. With our years of design experience, we can provide outstanding design and professional services at the early stage of project, scheme design, design development, construction drawing design, on-site service and in the whole process of construction. We are dedicated to turning today’s blueprint into tomorrow’s excellent construction works with innovative and practicable design ideas, high quality and efficient services and high sense of social responsibility.

ZAGROS Joint Venture Partners

Response to investment opportunity to build 500,000 housing units in Iraq



ZAGROS Joint Venture Partners

Response to investment opportunity to build 500,000 housing units in Iraq



SUBSIDIARIES / ARCHITECTURAL STUDIO

- SHANGHAIBRANCHOFFICEOFBEIJING ARCHITECTURAL & ENGINEERING
- DESIGN COMPANY SHANGHAI
 - Beijing T Source Landscape Design Studio BEIJING
 - Project R&D center BEIJING
 - Prestress and Spatial Structure Design and Research Institute BEIJING
 - ATELITERFRONTI BEIJING
 - EHE-DESIGN SALON BEIJING
 - Angola Office Luanda